

Contact



Ronny Kamp

Business Representative
of the German Federal State
of Rhineland-Palatinate in Israel

☎ +972 3 680 6800

✉ israel@rlp-international.de

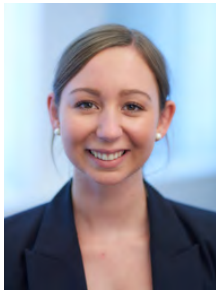


Julian Schäfer

Chief Officer for Business Location
Marketing
Ministry of Economic Affairs,
Transport, Agriculture and
Viniculture Rhineland-Palatinate

☎ +49 (0) 6131 162231

✉ julian.schaefer@mwwlw.rlp.de



Nuria Niebler

Executive Officer for
Business Location Marketing
Ministry of Economic Affairs,
Transport, Agriculture and
Viniculture Rhineland-Palatinate

☎ +49 (0) 6131 165241

✉ nuria.niebler@mwwlw.rlp.de



Marcel Klein

Executive Officer for
Business Location Marketing
Ministry of Economic Affairs,
Transport, Agriculture and
Viniculture Rhineland-Palatinate

☎ +49 (0) 6131 162417

✉ marcel.klein@mwwlw.rlp.de

www.gold.rlp.de

Ministry of Economic Affairs, Transport, Agriculture and Viniculture Rhineland-Palatinate

Stiftsstraße 9
55116 Mainz



Gold
Rheinland-
Pfalz

Business Representation of the German Federal State of Rhineland-Palatinate in Israel



Gold
Rheinland-
Pfalz

Fotos: metamorworks - istockphoto; MWWLW

www.gold.rlp.de

The Gold Factors of Rhineland-Palatinate

Gold stands for excellence, for high standards and for wealth. And Rhineland-Palatinate is rich in convincing factors: rich in highly qualified workers, innovative ideas, global players, traditional family businesses, in joie de vivre and openness – simply rich in a carefree, way of life.

1. European Top Location with Bright Prospects

Its location in the heart of Germany, close to Belgium, France and Luxembourg is a real plus for international relations. In addition, there is the proximity to Frankfurt am Main, to the main regional airports, good train and transport connections and to the Rhine-Main and Rhine-Neckar regions.

2. Community of World Market Leaders and Worldwide Networks

Global players, traditional family businesses, highly specialized medium-sized companies and at the same time world-renowned global players such as BASF, Boehringer Ingelheim and BioNTech make up the Rhineland-Palatinate economy, which combines tradition and innovation – this is the diversity of Rhineland-Palatinate's economy.

From the automotive industry and environmental technology to the chemical and pharmaceutical industry, industrial health management to AI: Rhineland-Palatinate companies are financially strong & crisis-resistant. Rhineland-Palatinate has a large international business network with 5 business representations including Israel, China and Vietnam, and 20 contact offices around the world.

3. Top Performers for Companies

In Rhineland-Palatinate, academic and vocational education and training is a top priority. More than 20 universities, colleges and research institutions provide for the best trained talent through tuition-free initial studies.

4. Space for development of Bright Minds and Fertile Ground for R&D

Rhineland-Palatinate is a land of innovation. AI has been researched here for over 30 years – in a cooperation between universities, traditional companies and start-ups that is unique in the world. Research institutions such as the German Research Centre for Artificial Intelligence (DFKI) in Kaiserslautern and outstanding universities provide impetus for innovation & drive forward the applications of AI – a decisive location factor for start-ups in the high-tech sector! Openness and a thirst for innovation, the willingness to look at things from a different angle and to tread unknown paths are characteristics that international scientists share with the people of Rhineland-Palatinate. Research meets fertile ground here to produce new technologies & processes as well as new gold standards.

5. Sustainable Future

The state government pursues its own sustainability strategy. Companies of different sectors and sizes can receive financial support for investments in the area of sustainability. Whether SME or big player – sustainable business is at home in Rhineland-Palatinate: climate-neutral hydrogen, high-tech solutions for saving energy or recycling plastics.

6. Joie de vivre as a Recipe for Success

Rhineland-Palatinate is a land of joie de vivre and conviviality – but behind this there is also a high demand for quality and sustainability. Joie de vivre is a researched recipe for success, it increases resilience in times of crisis. The wines from Germany's number one wine state are internationally awarded, the unique cultural landscape, which boasts many hours of sunshine, but also seven UNESCO World Heritage Sites make Rhineland-Palatinate a state with bright prospects.

